

# The Customer Friendly Company for Over 50 Years

Shelters • Pavilions • Ramadas • Gazebos • Fabric Shades  
Band Shells • Amphitheaters • Carousel Covers • Bridges  
Dugouts • Mini Shelters • Kiosks • Trellises • Pergolas  
Enclosed Shelters • Restrooms • Concessions



## RCP Shelters, Inc.

**800-525-0207**

[www.rcpshelters.com](http://www.rcpshelters.com)

2100 SE Rays Way • Stuart, FL 34994

[info@rcpshelters.com](mailto:info@rcpshelters.com)





# OUR STORY

From humble beginnings, mechanical engineer James Ritter founded RCP Shelters in 1957. His vision was to provide superior quality construction materials at competitive prices. RCP continues this tradition today as a small, third generation, family-owned business.

Today, RCP is the industry's most diverse shelter manufacturer. We offer a variety of pre-engineered structures available in laminated wood, tube steel, and fabric. Our products have been used for numerous purposes, such as:

- Gazebos, Pavilions, and Shelters
- Amphitheatres and Band Shells
- Dugouts
- Carousel Covers
- Playground Covers
- Mini Shelters and Kiosks
- Trellis, Arbor, and Pergola Designs
- Enclosed, Concession, and Restroom Shelters

Each project is individually engineered to meet or exceed local building code and loading conditions.

Our flexible designs have met 265 psf snow loads in the Rocky Mountains and 150 mph wind loads in Guantanamo Bay, Cuba. Whether your next project is small or large, custom or standard, RCP can provide a shelter that meets your needs.

Our experienced, friendly staff looks forward to working with you!



# MODEL KEY

<b>1P</b>	Single Post
<b>2P</b>	Two Post
<b>2T</b>	Two Tier Superstructure
<b>3T</b>	Three Tier Superstructure
<b>A</b>	Solid Arch
<b>AS</b>	All Steel
<b>B</b>	Bench
<b>BB</b>	Back-to-Back Benches
<b>BBQ</b>	2nd Tier "Barbecue" Roof
<b>BR</b>	Bridge
<b>BS</b>	Band Shell
<b>C</b>	Cupola
<b>CG</b>	Closed Gable
<b>CL</b>	Cantilever
<b>CR</b>	Curved Roof
<b>DOD</b>	Dodecagon
<b>EH</b>	Elongated Hexagon
<b>ENC</b>	Enclosed
<b>FS</b>	Fabric Shade
<b>G</b>	Gable Roof Style
<b>GLX</b>	Galaxy
<b>H</b>	Hip Roof Style
<b>HEX</b>	Hexagon
<b>KB</b>	Knee Brace
<b>LW</b>	Glued Laminated Wood
<b>M</b>	Metal Roofing
<b>MB</b>	Message Board
<b>O</b>	Ornamentation
<b>OCT</b>	Octagon
<b>OKA</b>	Open-Knee Arches
<b>QC</b>	Quad Column
<b>QG</b>	Quad Gable
<b>R</b>	Railings
<b>RND</b>	Round Steel Columns
<b>S</b>	Sail
<b>SLF</b>	Steel Frame w/ Wood Deck
<b>SQ</b>	Square
<b>SS</b>	Single Slope
<b>SSM</b>	Standing Seam Roofing
<b>T</b>	Truss
<b>TB</b>	Table & Benches
<b>TR</b>	Trellis
<b>TRI</b>	Triangular



# TABLE OF CONTENTS



## Laminated Wood Shelters

- Gables ..... 6
- Arch Gables ..... 10
- Hips ..... 12
- Square Hips ..... 13
- Hexagons ..... 14
- Arch Hexagons ..... 18
- Octagons ..... 20
- Specifications ..... 21



## All Steel Shelters

- Gables ..... 22
- Hips ..... 24
- Squares Hips ..... 26
- Hexagons ..... 28
- Galaxies ..... 30
- Octagons ..... 31
- Dodecagons ..... 32
- Specifications ..... 33



## Steel Frame Shelters

- Gables ..... 34
- Hips ..... 36
- Square Hips ..... 37
- Hexagons ..... 38
- Galaxies ..... 39
- Octagons ..... 40



## Specialty Structures

- Mini Shelters ..... 42
- Dugouts ..... 44
- Carousel Covers ..... 45
- Amphitheatres & Band Shells ..... 46
- Restrooms & Concessions ..... 48
- Bridges ..... 52
- Trellises ..... 53
- Custom Designs ..... 54



## Fabric Shades ..... 58

## Other Information

- Options & Accessories ..... 64
- Metal Roofing Options ..... 65
- LEED Information ..... 66
- Steel Finishes & Warranty Information ..... 67



# THE RCP ADVANTAGE

RCP's engineers are licensed and certified in all 50 states and Canada. Each project is individually engineered to meet or exceed local building code and conditions.

RCP's fabrication facilities are AITC and AISC certified.

RCP's welders and inspectors are AWS certified for guaranteed quality.

RCP's sanitary designs eliminate all places for birds or animals to roost.

RCP's steel designs utilize concealed, bolted connections that do not require field welding, resulting in lower installation costs. Unlike inferior designs, RCP does not use unsightly exposed fasteners.

RCP's tube steel gable frames are designed as shop welded assemblies, thus reducing installation costs, and resulting in a more aesthetically pleasing appearance by eliminating exposed bolts and access hole cover plates.

RCP's tube steel purlins and tension ring members are designed normal to the roof, lowering installation cost by eliminating the need for unsightly roof deck support members.

RCP's steel ornamentation is precision plasma cut from high strength, durable plate steel.

RCP's powder coating facility shot blasts, phosphate washes, powder coat primes, and powder coat finishes steel members using super durable polyester TGIC powder.

RCP's standard powder coating finish surpasses the industry standard for salt spray resistance by 2,000 hours having passed an independent 5,000 hours salt spray resistance test with exceptional results.

RCP's cupolas are shop assembled for simple field installation, resulting in significantly lower installation costs and increased quality.

RCP's standard steel column fixed moment base design utilizes concrete to conceal the anchor bolts, which lowers material and installation costs. Inferior designs require a column access hole and cover plate that is easily removed by vandals, exposing the unprotected interior of the column to corrosion.

RCP's standard tongue and groove roof deck is #1 grade nominal 2" x 8", which requires fewer runs than 2" x 6", resulting in lower installation costs.

RCP's 50+ year legacy continues as a third generation, family owned business.

RCP's industry leading customer service remains unsurpassed.

RCP's sole business focus is park structures. Our dedicated staff has the knowledge and experience to assist with your projects' requirements in a timely manner.

RCP appreciates your business!



RCP COLUMN



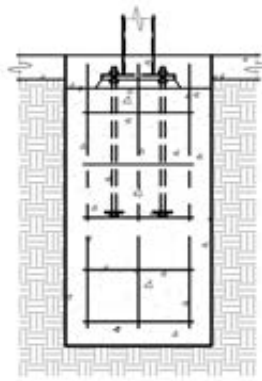
BRAND X COLUMN



RCP PURLIN



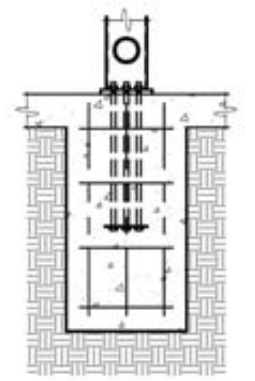
BRAND X PURLIN



**FIXED BASE COLUMN**

RCP Standard Design

- Easy to adjust column elevations for proper installation utilizing concealed grout and leveling nuts
- Lower maintenance and higher vandal resistance
- Lower installation costs with simplified column top connection
- Epoxy anchors may be substituted for anchor bolts on many designs
- Conforms to OSHA Steel Erection Standard 29 CFR 1926.750 Part R



**SURFACE MOUNTED PINNED BASE**

Non-standard Design

- Unable to adjust elevations for proper installation without utilizing exposed grout and leveling nuts
- Access hole with cover plate required
- Cover plates prone to vandalism
- Unprotected column interior prone to corrosion
- Higher frame installation cost due to required moment connection at column top
- In locations subject to frost, lack of isolation joint around foundation may cause slab cracking



LW-BS-A2647-04





## LW-G Laminated Wood

# GABLE

The Laminated Wood Gable proves to be RCP Shelters' most popular model year after year. The LW-G's success can be attributed to its efficient, aesthetically pleasing design built with high quality, and low maintenance materials.



LW-G2044-04



LW-G1220-03

### Standard Features:

- Glued laminated pitch & tapered curved beams
- Treated glued laminated columns
- #1 2x8 T&G SYP roof deck, S/L
- #1 2x6 treated SYP fascia
- Prime painted steel connection plates
- 3:12 or 4:12 roof pitch
- Engineered to local code
- No place for birds or animals to roost
- Low maintenance
- All deck butt joints occur over a beam
- Easily installed, vandal resistant nailed column to beam connection

### Optional Features:

- Drawings sealed by registered, professional engineer
- Factory finished beams, deck, fascia
- CCA, MCA, CA, ACQ treatments
- Cedar, Douglas Fir, and other species
- Tube steel columns
- Galvanized or stainless steel connection plates
- 30 year shingle roofing
- 26 gauge exposed fastener metal roofing
- True standing seam metal roofing
- 5:12 or 6:12 roof pitch
- Cedar louvered cupola
- 2nd tier "BBQ" superstructure
- Partially or fully enclosed (See pg. 48)



LW-G1220-03



### Popular Sizes

Widths								
12'	14'	16'	18'	20'	22'	24'	26'	28'
30'	34'	36'	40'	45'	50'	55'	60'	70'
Lengths								
12'	20'	28'	36'	44'	52'	60'	68'	76'
84'	92'	100'	108'	116'	124'	132'	140'	148'

Other sizes available upon request

LW-G3052-03



LW-G2228-04



LW-G1212-03





# LW-G GABLE



LW-G3060-04



LW-G3460-03







LW-G2420-03



## LW-G GABLE

LW-G3052-03



LW-G2020-03



Vandal Resistant Nail Connection Plate





## LW-A-G Laminated Wood ARCH GABLE

The Laminated Wood Arch series provides a premium, artistic alternative to the post and beam models. The arches are useful in religious and forested settings to accentuate the surrounding architectural and natural backgrounds in which they stand. Moreover, the arch design is ideal for large clear spans and steep roof pitches.



LW-A-G2036-03



LW-A-G2444-04-C

### Standard Features:

- CCA treated glued laminated arches
- #1 2x8 T&G SYP roof deck, S/L
- #1 2x6 treated SYP fascia
- Galvanized base shoes
- No steel connection plates required
- 4:12 roof pitch
- Engineered to local code
- No place for birds or animals to roost on solid arch models
- Low maintenance
- All deck butt joints occur over a beam

### Optional Features:

- Drawings sealed by registered, professional engineer
- Factory finished arches, deck, fascia
- Cedar, Douglas Fir, and other species
- Stainless steel base shoes
- 30 year shingle roofing
- 26 gauge exposed fastener metal roofing
- True standing seam metal roofing
- Roof pitches from 3:12 to 12:12
- Cedar louvered cupola
- 2nd tier "BBQ" superstructure
- Partially or fully enclosed (See pg. 48)



LW-OKA-G Laminated Wood

# OPEN KNEE ARCH GABLE

Popular Sizes

Widths								
12'	14'	16'	18'	20'	22'	24'	26'	28'
30'	34'	36'	40'	45'	50'	55'	60'	70'
Lengths								
12'	20'	28'	36'	44'	52'	60'	68'	76'
84'	92'	100'	108'	116'	124'	132'	140'	148'

Other sizes available upon request

LW-OKA-G1620-04



LW-OKA-G2444-04



800-525-0207 • [www.rcpshelters.com](http://www.rcpshelters.com)



# LW-H Laminated Wood Hip



## Popular Sizes

Widths								
12'	14'	16'	18'	20'	22'	24'	26'	28'
30'	34'	36'	40'	45'	50'	55'	60'	70'
Lengths								
12'	20'	28'	36'	44'	52'	60'	68'	76'
84'	92'	100'	108'	116'	124'	132'	140'	148'

Other sizes available upon request



### Standard Features:

- Glued laminated pitch & tapered curved beams
- Treated glued laminated columns
- #1 2x8 T&G SYP roof deck, S/L
- #1 2x6 treated SYP fascia
- Prime painted steel connection plates
- 3:12 or 4:12 roof pitch
- Engineered to local code
- No place for birds or animals to roost
- Low maintenance
- All deck butt joints occur over a beam

### Optional Features:

- Drawings sealed by registered, professional engineer
- Factory finished beams, deck, fascia
- CCA, MCA, CA, ACQ treatments
- Cedar, Douglas Fir, and other species
- Tube steel columns
- Galvanized or stainless steel connection plates
- 30 year shingle roofing
- 26 gauge exposed fastener metal roofing
- True standing seam metal roofing
- 5:12 or 6:12 roof pitch
- Cedar louvered cupola
- 2nd tier "BBQ" superstructure
- Partially or fully enclosed (See pg. 48)



# LW-SQ Laminated Wood SQUARE HIP

## Popular Sizes

Square Hip Sizes						
10'	12'	14'	15'	16'	20'	24'
25'	30'	36'	40'	44'	50'	60'

Other sizes available upon request



LW-SQ30-04



LW-SQ10-04



LW-SQ16-06-O



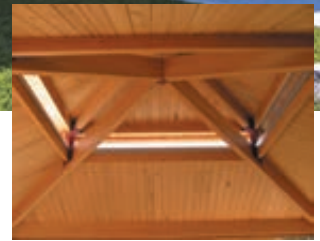
LW-SQ30-2T-06

### Standard Features:

- Glued laminated beams
- Treated glued laminated columns
- #1 2x8 T&G SYP roof deck, S/L
- #1 2x6 treated SYP fascia
- Prime painted steel connection plates
- 4:12 or 6:12 roof pitch
- Engineered to local code
- No place for birds or animals to roost
- Low maintenance
- All deck butt joints occur over a beam

### Optional Features:

- Drawings sealed by registered, professional engineer
- Factory finished beams, deck, fascia
- CCA, MCA, CA, ACQ treatments
- Cedar, Douglas Fir, and other species
- Tube steel columns
- Galvanized or stainless steel connection plates
- 30 year shingle roofing
- 26 gauge exposed fastener metal roofing
- True standing seam metal roofing
- Roof pitches from 4:12 to 12:12
- Cedar louvered cupola
- 2nd tier clerestory superstructure
- Partially or fully enclosed (See pg. 48)





## LW-HEX Laminated Wood HEXAGON

The Laminated Wood Hexagon allows for large open areas unobstructed by columns. The hexagon's shapely design is useful in covering group gathering areas and hosting large parties. Available in single or double tiered roofs, the hexagon models also comes with a wide variety of product enhancements to fit your project's requirements.

LW-HEX20-04



LW-HEX35-2T-08



### Standard Features:

- Glued laminated beams
- Treated glued laminated columns
- #1 2x8 T&G SYP roof deck, S/L
- #1 2x6 treated SYP fascia
- Prime painted steel connection plates
- 4:12 or 6:12 roof pitch
- Engineered to local code
- No place for birds or animals to roost
- Low maintenance
- All deck butt joints occur over a beam

### Optional Features:

- Drawings sealed by registered, professional engineer
- Factory finished beams, deck, fascia
- CCA, MCA, CA, ACQ treatments
- Cedar, Douglas Fir, and other species
- Tube steel columns
- Galvanized or stainless steel connection plates
- 30 year shingle roofing
- 26 gauge exposed fastener metal roofing
- True standing seam metal roofing
- Roof pitches from 4:12 to 12:12
- Cedar louvered cupola
- 2nd tier clerestory superstructure
- Partially or fully enclosed (See pg. 48)



LW-HEX16-06-COR



## Popular Sizes

Hexagon Diameters								
10'	12'	14'	15'	16'	20'	24'	25'	28'
30'	32'	35'	40'	45'	48'	50'	60'	65'

Other sizes available upon request

LW-HEX40-06-C



LW-HEX30-2T-06





LW-HEX32-06-COR



LW-HEX40-04



LW-HEX35-06-COR



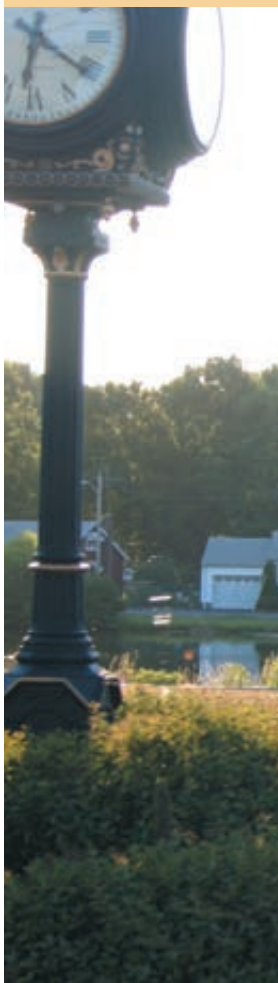




LW-HEX60-2T-04



LW-HEX35-2T-08-CR



LW-HEX Laminated Wood Hexagon

LW-HEX40-04





## LW-A-HEX Laminated Wood ARCH HEXAGON



LW-A-HEX30-2T-04



LW-A-HEX40-2T-04-CO

### Standard Features:

- CCA treated glued laminated arches
- #1 2x8 T&G SYP roof deck, S/L
- #1 2x6 treated SYP fascia
- Galvanized base shoes
- Prime painted steel connections
- 4:12 roof pitch
- Engineered to local code
- No place for birds or animals to roost on solid arch models
- Low maintenance
- All deck butt joints occur over a beam

### Optional Features:

- Drawings sealed by registered, professional engineer
- Factory finished arches, deck, fascia
- Cedar, Douglas Fir, and other species
- Galvanized steel connections
- Stainless steel base shoes and connections
- 30 year shingle roofing
- 26 gauge exposed fastener metal roofing
- True standing seam metal roofing
- Roof pitches from 3:12 to 12:12
- Cedar louvered cupola
- 2nd tier clerestory superstructure
- Partially or fully enclose (See pg. 48)



LW-A-HEX40-2T-04



### Popular Sizes

Arch Hexagon Diameters								
10'	12'	14'	15'	16'	20'	24'	25'	28
30'	32'	35'	40'	45'	48'	50'	60'	65'

Other sizes available upon request

LW-A-HEX50-04

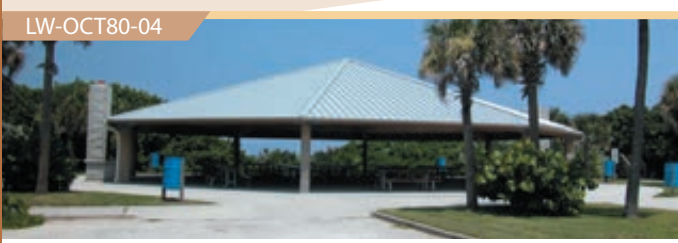


LW-A-HEX24-04





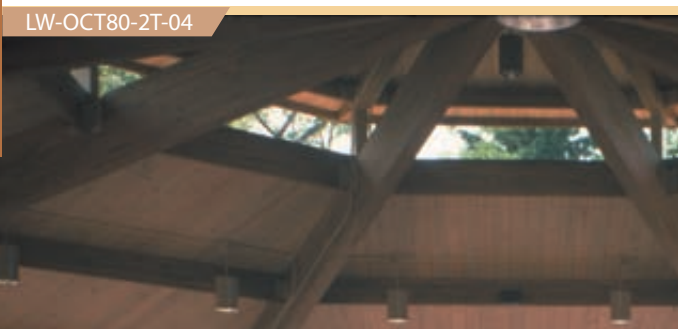
# LW-OCT Laminated Wood OCTAGON



LW-OCT80-04



LW-OCT25-06-COR



LW-OCT80-2T-04

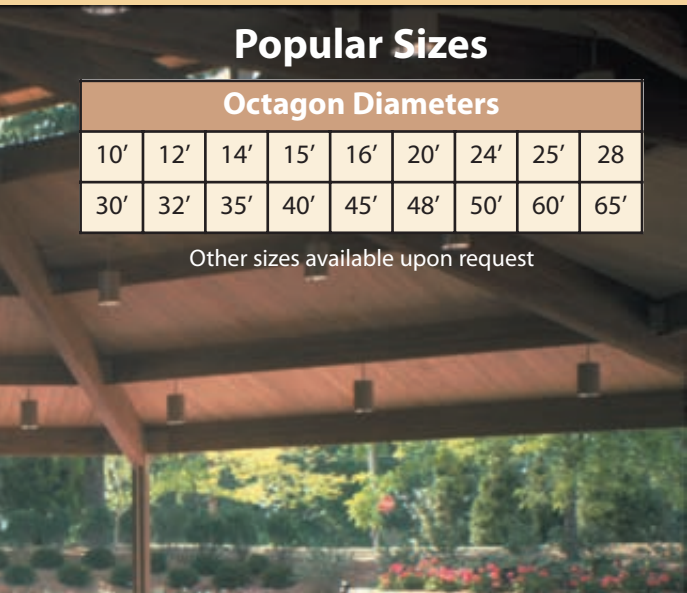
## Popular Sizes

Octagon Diameters								
10'	12'	14'	15'	16'	20'	24'	25'	28'
30'	32'	35'	40'	45'	48'	50'	60'	65'

Other sizes available upon request



LW-OCT18-06-COR



LW-OCT80-2T-04

### Standard Features:

- Glued laminated beams
- Treated glued laminated columns
- #1 2x8 T&G SYP roof deck, S/L
- #1 2x6 treated SYP fascia
- Prime painted steel connection plates
- 4:12 or 6:12 roof pitch
- Engineered to local code
- No place for birds or animals to roost
- Low maintenance
- All deck butt joints occur over a beam

### Optional Features:

- Drawings sealed by registered, professional engineer
- Factory finished beams, deck, fascia
- CCA, MCA, CA, ACQ treatments
- Cedar, Douglas Fir, and other species
- Tube steel columns
- Galvanized or stainless steel connection plates
- 30 year shingle roofing
- 26 gauge exposed fastener metal roofing
- True standing seam metal roofing
- Roof pitches from 4:12 to 12:12
- Cedar louvered cupola
- 2nd tier clerestory superstructure
- Partially or fully enclosed (See pg. 48)



# LAMINATED WOOD SPECIFICATIONS

Detailed 3-part specifications are available upon request.

**Design Criteria:** Structure shall be designed to be free standing, open air pavilion in conformance with all applicable building codes.

**Scope:** Structure shall be a glued laminated picnic shelter over a 4" minimum thickness reinforced concrete slab. Shelter shall have a clear space, without center columns or open knee bracing. The owner or contractor shall be responsible for unloading, temporary storage, soil testing (if necessary), site preparation, concrete slab, and erection of structure. Structure shall be designed by professional engineers. When storing, the owner shall be responsible for protection of materials after arrival. Block members off the ground and separate with wood strips to allow circulation. Cover top and bottom with moisture resistant paper.

**Beams:** Beams shall be pre-drilled glued laminated, architectural appearance grade Southern Pine, APA/EWS certified members, factory sealed, and individually wrapped for protection in transit. Unloading Note: Use non-marring slings, block materials off ground.

**Roof Deck:** Shall be nominal 2" x 8" #1 grade SYP, T&G, edge veed one side, kiln dried, and furnished in specified lengths so that all butt joints occur over a laminated beam support.

**Fascia & Nailer:** Fascia shall be nominal 2" x 6" #1 grade SYP, MCA pressure treated 0.06 pcf per AWWA standards. Nailer shall be nominal 2" x 4" #1 grade SYP.

**Pre-Engineered Package:** The shelter shall be a pre-cut and or, pre-fabricated package that shall include the structural frame and installation drawings. The structure shall be shipped in a knocked down manner for minimum shipping charges.

**Columns:** Columns shall be glued laminated southern pine, APA / EWS certified members, pressure treated 0.6 pcf, sized to meet loading requirements. Columns shall be embedded 4' below finished grade.

**a. Tube Steel Columns:** (Optional) Columns shall be structural tube steel sized to meet loading conditions. Columns shall receive a 6 stage phosphate wash, one coat of zinc rich primer, and a top-coat with polyester powder coating, 4 to 6 mils thick. The columns shall be packaged in foam, cardboard, and stretch wrap to protect during transit. Columns' anchor bolts shall be furnished by GC or owner as required by foundation design.

**Hardware:** All hardware connections shall be ASTM A-36 steel, prime painted after fabrication. Hardware shall include all required nails and fasteners.

**Roofing** (Optional)

**a. 30-Year Shingle:** Shall be 30-year warranty, class "A" fire rated, fiberglass shingles over 15# felt underlayment. Roofing nails shall be 1 1/4" galvanized and supplied by the manufacturer. Drip edge applied continuously along perimeter.

**b. Metal Roofing:** Please refer to the Metal Roofing Options on page 65.

**Ornamentation & Railing:** (Optional) Overhead ornamentation shall be picket style on all sides. Picket style railings shall be #1 grade SYP, 0.4 CCA treated. All material shall be furnished in industry standard lengths, field cut, and assembled by others.

**Benches:** (Optional) Benches shall have galvanized steel pedestals and glued laminated treated wood seats (without backs).

**Cupola:** (Optional) Cedar louvered cupola shall have a copper or aluminum cap. Cupola shall be factory built and assembled. See page 64 for style options.

**Factory Finish:** (Optional) Beams, T&G roof deck, and fascia shall receive factory applied Wood Rx - Natural semi-transparent wood stain. Stain is recommended to preserve the beauty of the wood, but is not required.

## RCP Finish Colors:



Note: Custom colors available upon request

## RCP Laminated Wood Fundamentals

Structural glued-laminated timber (glu-lam) is one of the oldest engineered wood products. Simply put, glu-lam is material glued from suitably selected and prepared pieces of wood to form larger, structural members in either straight or curved form. RCP's shop laminates most wood species, specializing in Southern Yellow Pine, Port Orford Cedar, Douglas Fir-Larch, and Western Red Cedar. As a member of the AITC, RCP's shop assures compliance with ANSI/AITC A190.1 for quality.

### Advantages

- Aesthetically pleasing
- Budget friendly
- Minimum maintenance
- Easy installation
- Architectural freedom
- Large clear span capabilities
- Wood or steel columns
- Variety of waterproofing options
- Higher fire rating than steel
- Environmentally friendly renewable resource



## AS-G All Steel

# GABLE

The All Steel Gable offers a contemporary look to RCP's product line. This design possesses the capability of spanning extended distances with the desired clean look of all hidden fasteners. The shop welded, single piece roof beams allow for ease of installation atop the steel columns. A wide variety of frame and roofing colors allow for custom coordination with the project's surroundings.

AS-G1515-04



AS-G2030-04



### Standard Features:

- Gable beams are shop welded as single members so that no field assembly is required
- 5,000 hours salt spray resistant, powder coated tube steel frame
- 24 gauge exposed fastener metal roofing
- 4:12 roof pitch
- All hidden fasteners
- Engineered to local code
- No place for birds or animals to roost
- No field welding required

### Optional Features:

- Drawings sealed by registered, professional engineer
- Galvanized tube steel frame
- Architectural steel columns (See pg. 64)
- True standing seam metal roofing
- Roof pitches from 2:12 to 12:12
- 2nd tier clerestory superstructure
- Partially or fully enclosed (See pg. 48)



AS-G1216-04



### Popular Sizes

Widths									
10'	12'	14'	16'	18'	20'	22'	24'	26'	
28'	30'	32'	34'	36'	40'	42'	45'	50'	
Lengths									
12'	16'	20'	22'	24'	28'	30'	34'	36'	
40'	44'	48'	50'	52'	60'	64'	80'	124'	

Other sizes available upon request

AS-G2424-04



AS-G1212-2T-04



AS-G2044-04





# AS-H All Steel HIP

## Standard Features:

- 5,000 hours salt spray resistant, powder coated tube steel frame
- 24 gauge exposed fastener metal roofing
- 4:12 roof pitch
- All hidden fasteners
- Engineered to local code
- No place for birds or animals to roost
- No field welding required

AS-H3064-04



AS-H3640-04



AS-H3672-2T-04



AS-H1620-04







AS-H3064-04



### Popular Sizes

Widths									
10'	12'	14'	16'	18'	20'	22'	24'	26'	
28'	30'	32'	34'	36'	40'	42'	45'	50'	
Lengths									
12'	16'	20'	22'	24'	28'	30'	34'	36'	
40'	44'	48'	50'	52'	60'	64'	80'	124'	

Other sizes available upon request

AS-H1634-03



AS-H2030-04



AS-H3060-04





# AS-SQ All Steel SQUARE HIP

## Standard Features:

- 5,000 hours salt spray resistant, powder coated tube steel frame
- 24 gauge exposed fastener metal roofing
- 4:12 and 6:12 roof pitch
- All hidden fasteners
- Engineered to local code
- No place for birds or animals to roost
- No field welding required



AS-SQ30-06-RND



AS-SQ12-06



AS-SQ10-06-S



AS-SQ14-06





AS-SQ16-06



### Popular Sizes

Square Hip Sizes									
10'	12'	14'	15'	16'	18'	20'	22'	24'	
25'	26'	28'	30'	33'	36'	40'	44'	50'	

Other sizes available upon request

AS-SQ20-06



AS-SQ40-2T-04



AS-SQ50-06-RND





# AS-HEX All Steel HEXAGON

## Standard Features:

- 5,000 hours salt spray resistant, powder coated tube steel frame
- 24 gauge exposed fastener metal roofing
- 4:12 and 6:12 roof pitch
- All hidden fasteners
- Engineered to local code
- No place for birds or animals to roost
- No field welding required





AS-HEX18-04



### Popular Sizes

Hexagon Diameters									
10'	12'	14'	15'	16'	20'	24'	25'	28'	
30'	32'	35'	40'	45'	48'	50'	60'	65'	

Other sizes available upon request

AS-HEX42-04



AS-HEX28-04



AS-HEX40-04-C





**AS-GLX All Steel**

**GALAXY**

**Standard Features:**

- 5,000 hours salt spray resistant, powder coated tube steel frame
- 24 gauge exposed fastener metal roofing
- 8:12 and 12:12 roof pitch
- All hidden fasteners
- Engineered to local code
- No field welding required



**Popular Sizes**

Galaxy Diameters					
14'	16'	18'	20'	22'	24'
28'	31'	35'	39'	48'	60'

Other sizes available upon request





# AS-OCT All Steel OCTAGON

## Standard Features:

- 5,000 hours salt spray resistant, powder coated tube steel frame
- 24 gauge exposed fastener metal roofing
- 5:12 roof pitch
- All hidden fasteners
- Engineered to local code
- No place for birds or animals to roost
- No field welding required



## Popular Sizes

Octagon Diameters							
12'	16'	18'	20'	24'	30'	32'	35'
36'	39'	40'	44'	48'	50'	60'	70'

Other sizes available upon request

AS-OCT36-2T-05-COR



AS-OCT48-3T-05-C



AS-OCT18-2T-05-COR



AS-OCT40-2T-05-C





**AS-DOD All Steel**

**DODECAGONS**

**Standard Features:**

- 5,000 hours salt spray resistant, powder coated tube steel frame
- 24 gauge exposed fastener metal roofing
- 6:12 roof pitch
- All hidden fasteners
- Engineered to local code
- No place for birds or animals to roost
- No field welding required

AS-DOD49-2T-06-C



AS-DOD49-2T-06-C



**Popular Sizes**

Dodecagon Diameters							
12'	16'	18'	20'	24'	30'	32'	35'
36'	39'	40'	44'	49'	50'	60'	70'

Other sizes available upon request

AS-DOD49-2T-06-C



AS-DOD49-06-C







# STEEL SPECIFICATIONS

Detailed 3-part specifications are available upon request.

**Design Criteria:** Structure shall be designed to be free standing, open air pavilion in conformance with all applicable building codes.

**Scope:** Structure shall be a steel picnic shelter over a 4" minimum thickness reinforced concrete slab. Shelter shall have a clear space, without center columns or open knee bracing. The owner or contractor shall be responsible for unloading, temporary storage, soil testing (if necessary), site preparation, concrete slab, and erection of structure. Structure shall be designed by professional engineers. When storing, the owner shall be responsible for protection of materials after arrival. Block members off the ground and separate with wood strips to allow circulation. Cover top and bottom with moisture resistant paper.

**Pre-Engineered Package:** The shelter shall be a pre-cut and or, pre-fabricated package that shall include the structural frame, panelized roof, fasteners, trim, and installation drawings. The structure shall be shipped in a knocked down manner for minimum shipping charges.

**Frame:** All structural framing of the pavilion shall be structural tube steel with end caps to form a clean, neat appearance with no place for birds or small animals to roost. Since all connections shall bolt together, field welding shall not be required. Bolts shall be concealed within the tubing where possible. The steel frame, railings (if applicable), and overhead ornamentation (if applicable) of the pavilion shall be prime painted.

**Columns:** The shelter shall be set on prepared footings. Foundation shall be constructed to local code, the shelter manufacturer's design, and good construction practices for the specific site conditions. The structure shall be attached to the top of the concrete by use of anchor bolts, furnished by GC or owner. See page 64 for style options.

**Column/Frame Finish:** Steel columns and frame shall be factory prime painted with a rust inhibitive modified alkyd primer according to Steel Structures Painting Council (SSPC-SP2) as out-lined in AISC 6.5. The columns and frame shall be finished painted in the field with a weather resistant paint, supplied and applied by the contractor or owner.

**a. Powder Coat:** (Optional) Columns and frame shall receive a 6 stage phosphate wash, one coat of zinc rich primer, and a top-coat with polyester powder coating, 4 to 6 mils thick. The columns and frame shall be packaged in foam, cardboard, and stretch wrap to protect during transit.

**Roofing:** The roof system shall be 24-gauge GALVALUME® steel panels with 1½" high ribs, 7½" on center. Panels shall be pre-cut, 3' wide by the length from the eave to the ridge. Angles shall be factory pre-cut. Matching roof trim and fasteners shall be supplied. Ribs shall run with the pitch of the roof for proper drainage. Hip and ridge beams shall have cap plates for metal deck bearing. Metal deck shall not bear on beam corner only. This is structurally unsound and will be rejected. Panels shall be pre-painted with a KYNAR 500® paint system with a color selected by owner from the standard color chart.

**NOTE:** See page 65 for alternative metal roofing option.

**Ornamentation:** (Optional) The shelter shall have overhead ornamentation on all sides. Ornamentation shall be factory welded to steel beams. See page 64 for style options.

**Railings:** (Optional) The shelter shall have plasma cut steel plate railings that are a minimum 36" high. See page 64 for style options.

**Benches:** (Optional) The shelter shall have PVC coated, perforated steel benches. Bench options shall be selected by owner/customer (6' or 8', with or without backs). Members shall have rounded edges and fasten from beneath the seat surface.

**Cupola:** (Optional) An all steel, louvered cupola shall be included for the peak of the pavilion. Cupola to be factory built, assembled, and attached to the compression ring for ease of installation. See page 64 for style options.



## RCP Steel Fundamentals

Steel, an alloy of iron and carbon, is the most versatile and important construction material in the world. RCP engineers utilize space frame analysis to size the HSS steel specifically to meet or exceed local code and loading requirements. As an AISC certified fabricator with Clark County, Nevada and City of Los Angeles fabricator approvals, RCP's fabrication facility assures compliance with the highest quality standards.

### Advantages

- Aesthetically pleasing
- Concealed connections
- Economical clerestory designs
- Easy installation
- Architectural freedom
- Large clear span capabilities
- Variety of waterproofing options (SLF series)
- Vast color selection and coordination
- Minimum 93% recycled tube and plate steel



## SLF-Steel Frame

# GABLE

The Steel Frame Gable series merges the contemporary look of steel with the rustic beauty of wood. This design offers the capability of spanning extended distances with an economic solution to supporting large snow loads and clerestory designs. The sturdy wood roof deck not only beautifies the project, but also allows for a wide variety of roofing options.

SLF-G30124-2T-04

SLF-G2430-2T-04



### Standard Features:

- Gable beams are shop welded as single members so that no field assembly is required
- 5,000 hours salt spray resistant, powder coated tube steel frame
- #1 2x8 T&G SYP roof deck, S/L
- #1 2x6 treated SYP fascia
- 4:12 roof pitch
- All hidden fasteners
- Engineered to local code
- No place for birds animals to roost
- No field welding required

### Optional Features:

- Drawings sealed by registered, professional engineer
- Factory finished deck & fascia
- Cedar, Douglas Fir, and other species
- Galvanized tube steel frame
- Architectural steel columns (See pg. 64)
- 30 year shingle roofing
- 26 gauge exposed fastener metal roofing
- True standing seam metal roofing
- Roof pitches from 2:12 to 12:12
- 2nd tier clerestory superstructure
- Partially or fully enclosed (See pg. 48)



### Popular Sizes

Widths									
10'	12'	14'	16'	18'	20'	22'	24'	26'	
28'	30'	32'	34'	36'	40'	42'	45'	50'	
Lengths									
12'	16'	20'	22'	24'	28'	30'	34'	36'	
40'	44'	48'	50'	52'	60'	64'	80'	124'	

Other sizes available upon request

SLF-G2440-04



SLF-G3060-04





## SLF-H Steel Frame

# HIP

### Standard Features:

- 5,000 hours salt spray resistant, powder coated tube steel frame
- #1 2x8 T&G SYP roof deck, S/L
- #1 2x6 treated SYP fascia
- 4:12 roof pitch
- All hidden fasteners
- Engineered to local code
- No place for birds animals to roost
- No field welding required

## Popular Sizes

Widths									
10'	12'	14'	16'	18'	20'	22'	24'	26'	
28'	30'	32'	34'	36'	40'	42'	45'	50'	
Lengths									
12'	16'	20'	22'	24'	28'	30'	34'	36'	
40'	44'	48'	50'	52'	60'	64'	80'	124'	

Other sizes available upon request

SLF-H3044-04



SLF-H2836-04



SLF-H1420-04





# SLF-SQ Steel Frame SQUARE HIP

## Standard Features:

- 5,000 hours salt spray resistant, powder coated tube steel frame
- #1 2x8 T&G SYP roof deck, S/L
- #1 2x6 treated SYP fascia
- 4:12 and 6:12 roof pitch
- All hidden fasteners
- Engineered to local code
- No place for birds animals to roost
- No field welding required



## Popular Sizes

Square Hip Sizes								
10'	12'	14'	15'	16'	18'	20'	22'	24'
25'	26'	28'	30'	33'	36'	40'	44'	50'

Other sizes available upon request





## SLF-HEX Steel Frame

# HEXAGON

### Standard Features:

- 5,000 hours salt spray resistant, powder coated tube steel frame
- #1 2x8 T&G SYP roof deck, S/L
- #1 2x6 treated SYP fascia
- 4:12 and 6:12 roof pitch
- All hidden fasteners
- Engineered to local code
- No place for birds animals to roost
- No field welding required

SLF-HEX50-04



### Popular Sizes

Hexagon Diameters									
10'	12'	14'	15'	16'	20'	24'	25'	28'	
30'	32'	35'	40'	45'	48'	50'	60'	65'	

Other sizes available upon request

SLF-HEX30-04



SLF-HEX30-04



SLF-HEX16-06





## SLF-GLX Steel Frame

# GALAXY

### Standard Features:

- 5,000 hours salt spray resistant, powder coated tube steel frame
- #1 2x8 T&G SYP roof deck, S/L
- #1 2x6 treated SYP fascia
- 8:12 and 12:12 roof pitch
- All hidden fasteners
- Engineered to local code
- No field welding required

SLF-GLX20-12-COR



SLF-GLX31-08-CO



SLF-GLX39-08-CO



SLF-GLX31-08-CO



### Popular Sizes

Galaxy Diameters					
14'	16'	18'	20'	22'	24'
28'	31'	35'	39'	48'	60'

Other sizes available upon request



## SLF-OCT Steel Frame

# OCTAGON

### Standard Features:

- 5,000 hours salt spray resistant, powder coated tube steel frame
- #1 2x8 T&G SYP roof deck, S/L
- #1 2x6 treated SYP fascia
- 5:12 roof pitch
- All hidden fasteners
- Engineered to local code
- No place for birds animals to roost
- No field welding required

SLF-OCT32-2T-05-C



SLF-OCT39-2T-05-COR



SLF-OCT44-3T-05-COR







## Popular Sizes

Octagon Diameters							
12'	16'	18'	20'	24'	30'	32'	35'
36'	39'	40'	44'	48'	50'	60'	70'

Other sizes available upon request

SLF-OCT32-05-CO



SLF-OCT32-2T-06



SLF-OCT32-05-CO





# MINI SHELTERS

## Standard Features:

- Glued laminated wood or steel superstructures
- 5,000 hours salt spray resistant, powder coat steel finish
- Engineered to local code
- 4:12 roof pitch
- No place for birds or animals to roost
- Low maintenance
- No field welding required

LW-G10-2P-04



AS-SQ8-1P-04-TB



## Optional Features:

- Drawings sealed by registered, professional engineer
- Factory finished beams, deck & fascia
- Galvanized steel finish
- 30 year shingle roofing
- 26 gauge exposed fastener metal roofing
- True standing seam metal roofing
- 6:12 roof pitch
- Wood or steel tables & benches
- Lockable message board

AS-SQ12-2P-04





LW-G10-2P-04-B



SLF-G8-2P-04-B



AS-G12-2P-04-TB



SLF-G8-2P-04-BB



SLF-SQ10-2P-04-BB



SLF-G8-2P-04-MB





# DUGOUTS

RCP Shelters can provide designs of all shapes and sizes. Standard widths range from 5' - 12' and lengths that range from 8' - 40'.





# CAROUSEL COVERS

RCP Shelters can provide designs of all shapes and sizes. Let our design specialists work with you to meet your project's needs.

AS-DOD80-2T-06-C



AS-DOD61-2T-06-CO



Historic Nunley's Carousel



LW-OCT84-2T-04-C



LW-OKA-HEX68-2T-06





# BAND SHELLS

RCP Shelters offers a multitude of amphitheater designs in both laminated wood and steel. These band shells are engineered to local building code with a number of options, including straight or curved members, arches, and enclosures for changing rooms or restrooms.

LW-BS-HEX60-03



LW-BS-G305054-03



LW-BS-A-HEX65-06



LW-BS-A-SS2034-04





LW-BS-A-G2647-04



LW-BS-WAVE4030-03



LW-BS-WAVE4030-03



LW-BS-A-HEX20-04



LW-BS-G305054-03





# RESTROOMS & CONCESSIONS

RCP Shelters can fully or partially enclose all of our shelter models. RCP enclosed shelters provide affordability, low maintenance, functionality, and aesthetics. Our specialists will match your project's needs with dozens of pre-engineered or custom designs.

LW-ENC-G7068-03-3FS



LW-ENC-G4076-04



LW-ENC-G3020-03-2FS

SLF-ENC-OCT40-05-2FS-RCO



## Available Features:

- Drawings sealed by registered, professional engineer
- Including plumbing & electrical engineering
- Doors (Interior & Exterior)
- Wall materials
- Cedar lap siding
- Hardiplank siding
- Nominal 5" x 8" Cedar laminated timbers
- Concrete block (CMU)
- Concession counter with roll-up counter windows
- Toilet partitions
- Electrical fixtures
- Insulation
- Exterior privacy screens
- Ventilation systems
- Cedar louvers
- Electric exhaust fans





LW-ENC-G2456-03-2FS



SLF-ENC-G4230-2T-09



LW-ENC-G4468-03



LW-ENC-G5060-03-3FSC



LW-ENC-G1220-03-1F



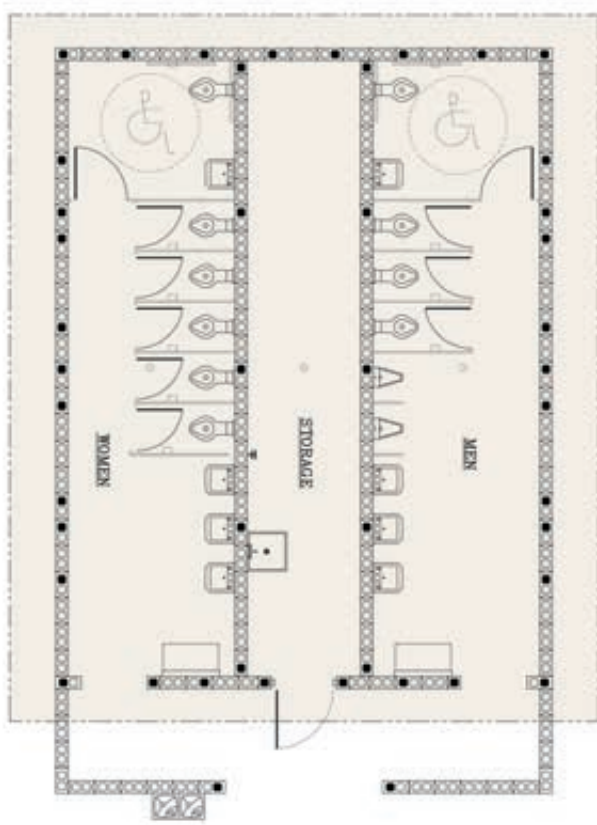
LW-ENC-HEX30-04-1FS



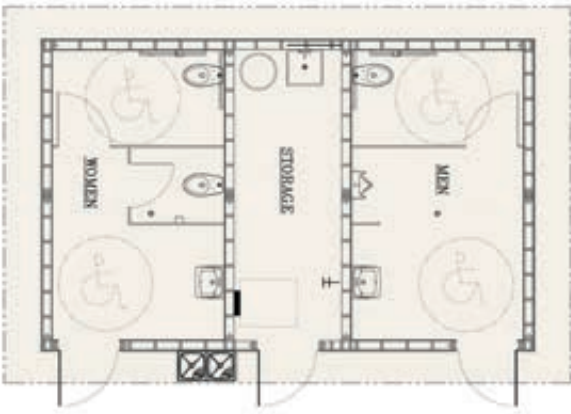
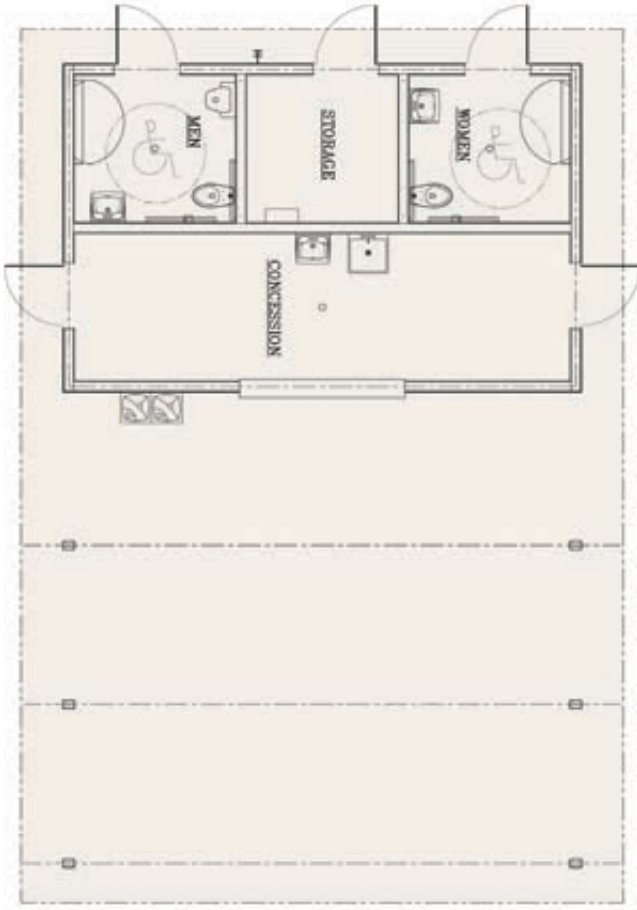


# RESTROOMS & CONCESSIONS

LW-ENC-G3036-04-6FS



LW-ENC-G3044-03-1FSC

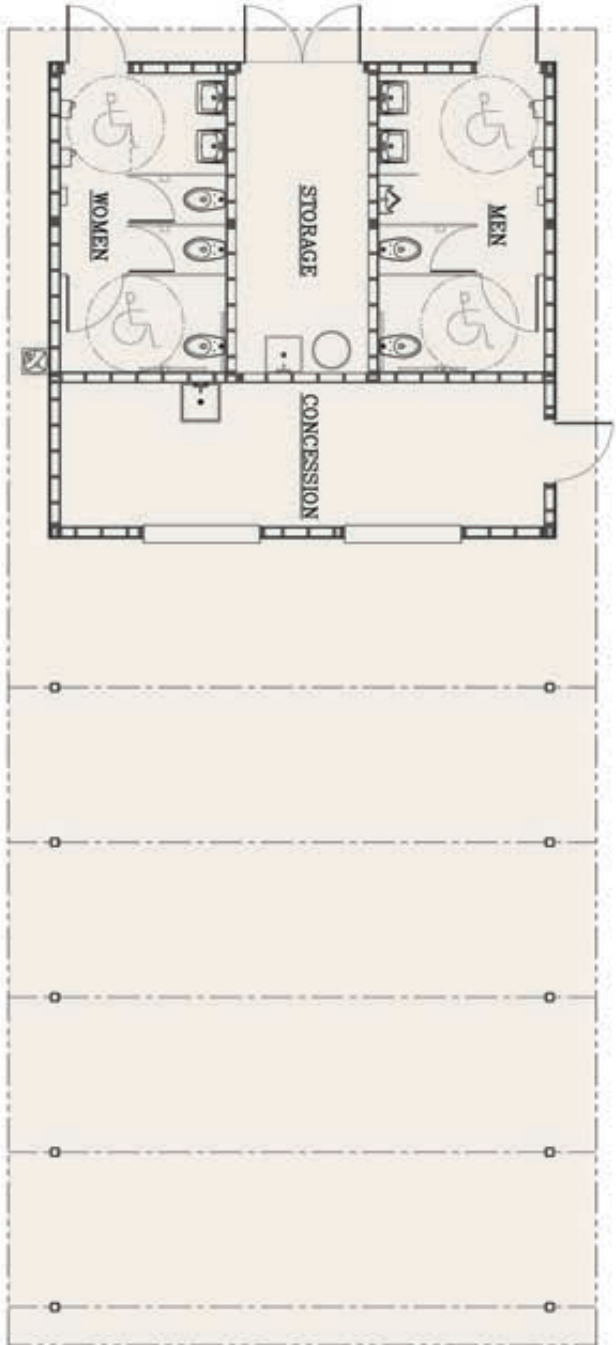
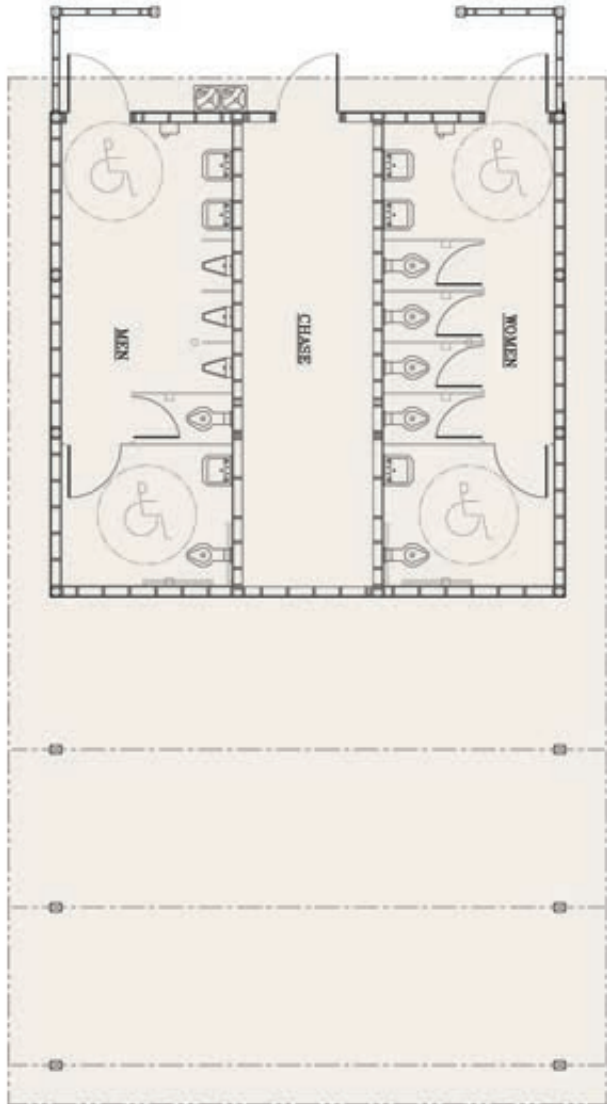


LW-ENC-G3020-03-2FS





All RCP floor plans are customizable to fit your project's specific needs!



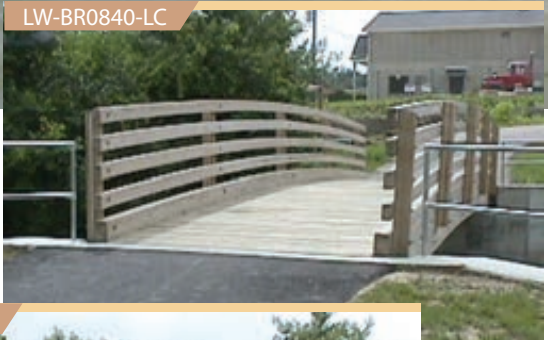


# BRIDGES

RCP shelters offers pedestrian bridges in both laminated wood and steel. Bridges are engineered to local code and come standard with safety rails. Optionally, RCP can provide an abutment design.



LW-BR0842-LC



LW-BR0840-LC



LW-BR0840-LC



AS-BR0612-LC



# TRELLISES

- Available in any RCP Shelters model style
- Laminated wood or steel superstructures
- Engineered to local code
- All wood is pressure treated
- Steel finishes are available as RCP's 5,000 hours salt spray resistant powder coated or hot-dipped galvanized frames.





# CUSTOM DESIGNS

RCP Shelters has been manufacturing park structures for over 50 years. With this experience comes the ability to provide an endless number of designs to suit your project's needs, so whether you have a complete design or just an idea, contact our specialists to help turn your project into a reality.

LW-ENC-SQ38-04-2STORY-2FC-OF



AS-G2030-08-GO-SSM



LW-G3035-06-C



AS-QG20-12-C





SLF-OCT32-10-DORM-CO



SLF-OCT32-2T-05-C



LW-T-G2020-2T-12-TR



LW-ENC-G45100-05-BBQ



SLF-OCT16-08-DORM-CO





# CUSTOM DESIGNS

LW-ENC-G4076-04



SLF-QG30-2XW3023-12



LW-G3325-05



LW-ENC-G45100-05-BBQ



LW-SF-HEX35







LW-T-BH2525-06-03



LW-T-G4060-04



SLF-G4230-2T-09-O



LW-ENC-G45100-04



LW-ENC-G45100-04





# FABRIC SHADES

The Fabric Shade series provides a cost effective solution to covering your project. These models are great for shading larger play areas and courts. In addition, they allow for endless creative designs to go along with their practical function.

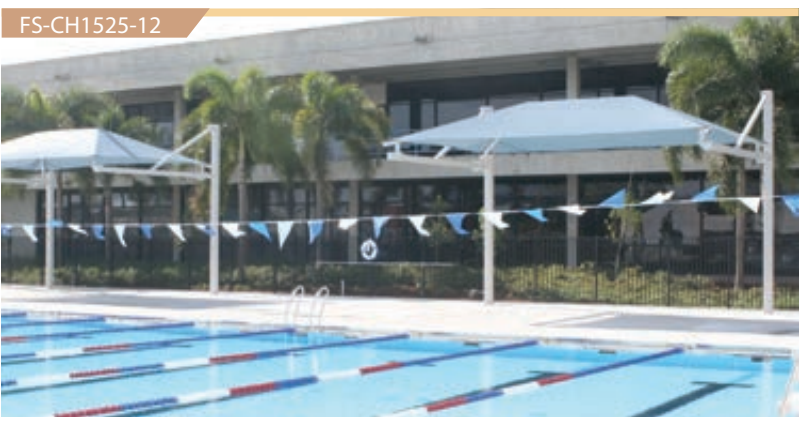
FS-HYP-S1414



FS-HYP-S1919



FS-CH1525-12



FS-CU12-08





FS-H3840-12



FS-DH4753-20



Multi-Sail



FS-TRI-S203838



FS-H3038-10





# FABRIC SHADES

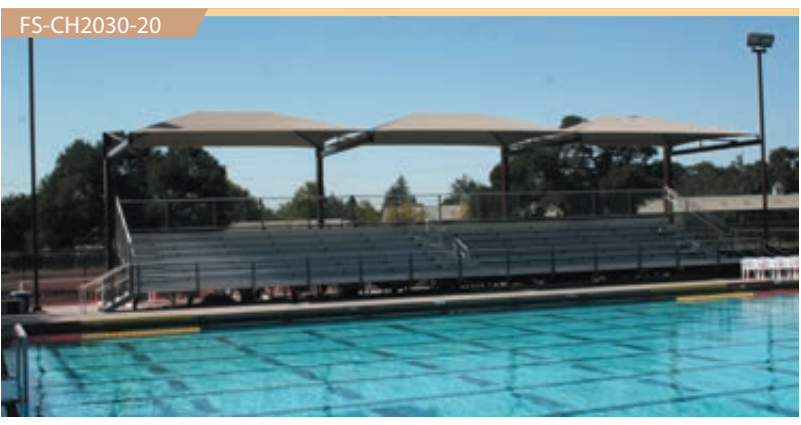
FS-H3050-10



FS-HYP-S3844



FS-CH2030-20



FS-U12-10





FS-TRI-S182020



FS-CH1216-10



FS-HYP-S1818



Multi-Sail



FS-TB0608-08





# FABRIC SHADES

FS-DH3040-12



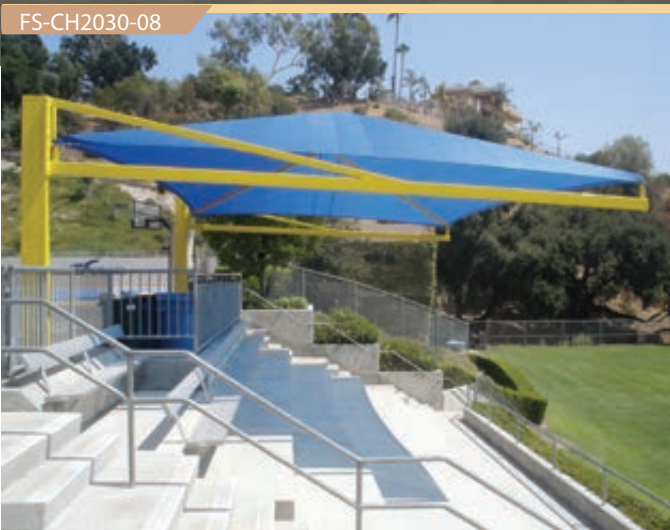
FS-H4055-15



FS-SCH1838-12



FS-CH2030-08



FS-H60-13





# STYLES & COLORS

- Engineered to local code
- 10 Year pro-rated warranty
- Custom sizes

- 98% Ultraviolet light blocking
- 90% Shading
- 10 Years or more fabric life

- Up to 25 degrees cooler underneath
- 20% Ventilation – fabric breathes



Hip Roofs



Multi Hip Roofs



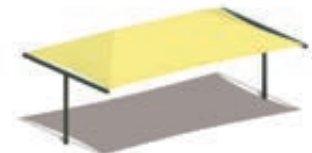
Hexagonal



Full-Cantilever



Semi-Cantilever



T-Bar



Hypar Sails



Triangular Sails



Multi-Sail Configuration



Center Post Umbrellas

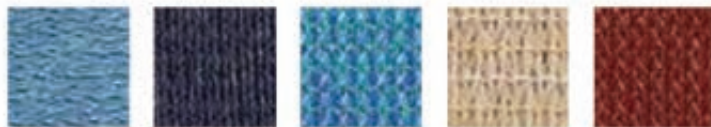


Cantilever Umbrellas

## Fabric Colors



Green Cream Yellow Forest Green Royal Blue



Sky Blue Navy Turquoise Beige Rust

## Powder Coated Colors



Black Almond Red Blue



Dark Brown Dark Green White Yellow



Teal Orange Gray Powder

### PLEASE NOTE:

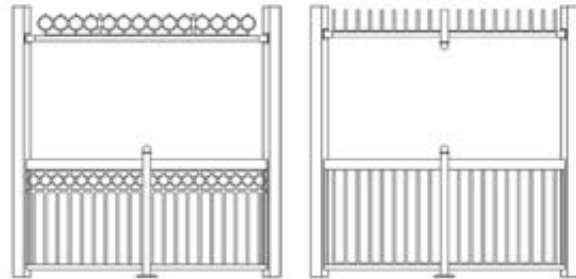
The colors on this chart do not necessarily depict the exact colors of the products and should only be used as a guide for color selection.



# OPTIONS & ACCESSORIES

## Rails & Overhead Ornamentation

Steel rails and ornamentation are available in an endless variety, including custom designs. All RCP designs are fabricated to exceed protective railing codes.



O

Picket



Diamond

Scout

Cross

## Cupolas

Both functional and decorative cupolas are available on all RCP models. Steel louvered cupolas are available for AS & SLF models. Cedar louvered cupolas are available for LW & SLF models. All cupolas are appropriately sized per the building dimensions.



C-SQ-CDR

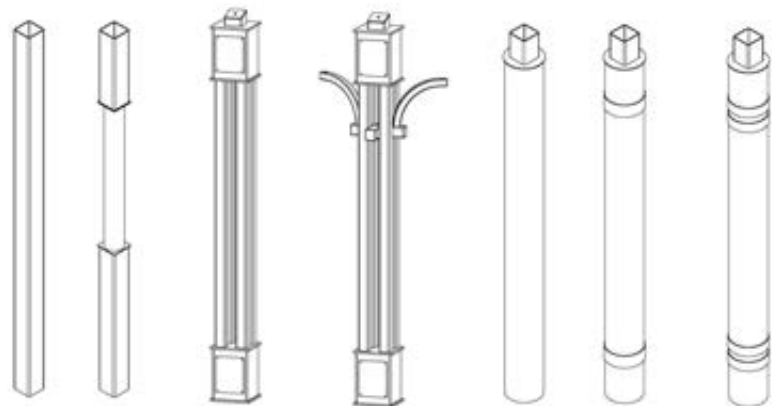
C-HEX-CDR

C-SQ-STL

C-HEX-STL

## Columns

Steel column upgrades are available to add a decorative look to the shelter. Multiple combinations of accents are available from oversized, multi-post, stepped, rounded, and collared.



C1

C2

C3

C4

C5

C6

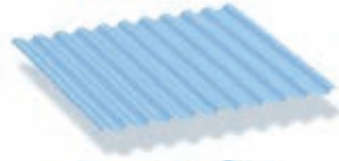
C7





## Factory Pre-Cut Panels

# METAL ROOFING



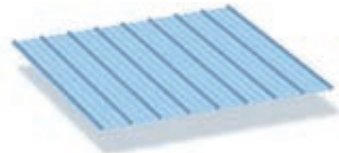
### Mega-Rib

- Standard over All Steel models
- Optional over wood roof decks



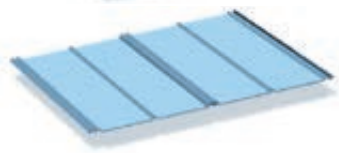
### Multi-Rib

- An alternative profile for All Steel models
- Optional over wood roof decks



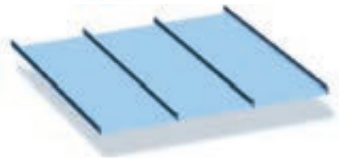
### Max-Rib

- Standard over wood roof decks



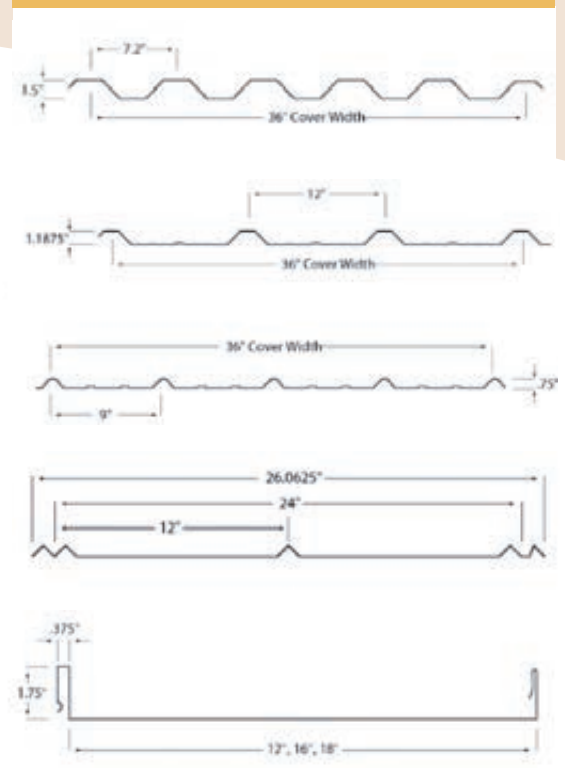
### 5V Panel

- An alternative profile for wood roof decks.



### Medallion-Lok

- True standing seam panel
- Hidden fastener roof panel
- No seaming machine required
- Optional over wood roof decks
- An alternative profile for All Steel models



## Metal Roofing Colors

24 Gauge Colors - Mega-Rib, Multi-Rib, Medallion-Lok

Regal White	Bone White	Sandstone	Surrey Beige	Mansard Brown	Ash Gray	Slate Gray
Charcoal	Matte Black	Medium Bronze	Dark Bronze	Patrician Bronze	Patina Green	Evergreen
Roman Blue	Colonial Red	Regal Blue	Copper Penny	Brite Red	Hartford Green	Brandywine

26 Gauge Colors - Max-Rib, 5V Panel

Regal White	Ash Gray	Light Stone	Ivory	Clay	Surrey Beige
Charcoal	Tudor Brown	Patrician Bronze	Matte Black	Brandywine	Autumn Red
Regal Blue	Roman Blue	Patina Green	Teal	Evergreen	Hartford Green

The KYNAR 500<sup>®</sup> paint system outperforms polyester powder, urethane, silicone polyester and acrylic coating in every category with better color retention, better gloss retention, and better resistance to chalking.

This high performance paint coating offers protection against weathering, aging, and pollution. Its performance keeps the painted metal looking vibrant year after year.

NOTE: RCP Shelters cannot guarantee availability of colors. Custom colors are available with minimum order of 50 squares.

800-525-0207 • [www.rcpshelters.com](http://www.rcpshelters.com)



# LEADERSHIP IN ENERGY AND ENVIRONMENTAL DESIGN

Leadership in Energy and Environment Design (LEED) is a green building certification program developed by the U.S. Green Building Council (USGBC) that encourages and accelerates global adoption of sustainable green building and development practices through a rating system in which whole points are awarded for satisfying criteria defined by the USGBC. RCP Shelters, Inc. endorses the initiative to build green, and can assist your project in the goal of achieving LEED certification.

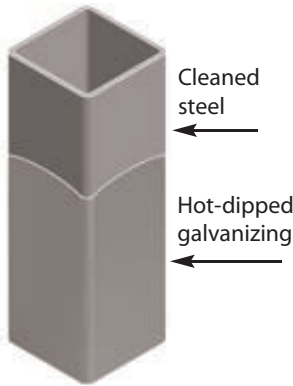
<b>Neighborhood Pattern and Design (NPD) Credit 7: Transit Facilities</b> RCP provides partially enclosed bus shelters and kiosks tailored to our customer's specifications.	1 Point
<b>Neighborhood Pattern and Design (NPD) Credit 14: Tree-Lined and Shaded Streets</b> RCP provides a number of shade solutions to cover pedestrian walkways.	Maximum of 2 Points
<b>Sustainable Sites (SS) Credit 4.2: Alternative Transportation – Bicycle Storage and Changing Rooms</b> RCP provides bicycle rack covers along with enclosed storage structures and restroom facilities.	1 Point
<b>Sustainable Sites (SS) – Credit 7.1: Heat Island Effect – Nonroof</b> RCP offers metal roofing that meets the SRI requirement of 29 along with vegetative and solar paneled roofing options.	1 Point
<b>Sustainable Sites (SS) – Credit 7.2: Heat Island Effect – Roof</b> RCP supplies roofing that meets SRI requirements at both slope definitions along with vegetative and solar paneled roofing alternatives.	1 Point
<b>Materials and Resources (MR) Credit 2: Construction Waste Management</b> RCP's shelters are manufactured from and shipped with nonhazardous recyclable materials.	Maximum of 2 Points
<b>Materials and Resources (MR) Credit 4: Recycled Content</b> RCP's shelters are manufactured from steel that is a minimum of 93% recycled content.	Maximum of 2 Points
<b>Materials and Resources (MR) Credit 7: Certified Wood</b> RCP's shelters are manufactured from wood that is certified.	1 Point
<b>Indoor Environmental Quality (IEQ) Prerequisite 2: Environmental Tobacco Smoke (ETS) Control</b> RCP provides gazebos and pavilions that can be utilized to designate acceptable smoking areas.	Requirement



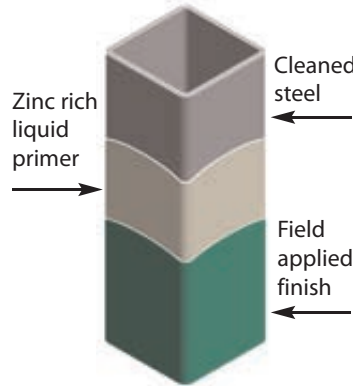


# STEEL FRAME & COLUMN FINISHES

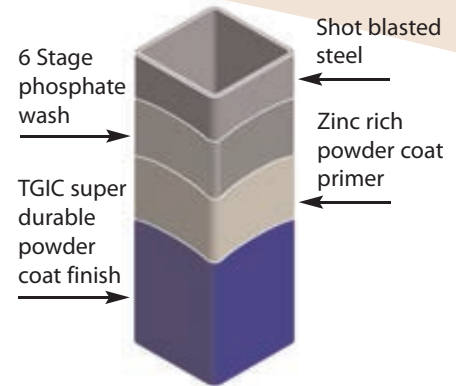
## Hot-dipped Galvanized Finish



## Prime Painted Finish



## 5000 Hours Salt Spray Resistant, Powder Coated Finish



## Powder Coating Colors

Tractor Red	Regal Red	Safety Orange	Traffic Yellow	Tractor Green	Evergreen	Dark Green	Booth Lite Blue	Border Blue S/G
Antique White	Scale Beige	Enclosure Beige	Glacier White	Jet Black	Ansi 49 Gray S/G	Ansi 61 Gray	Mill Gray	Chocolate Brown

Since gloss cannot be represented accurately in print, this page is limited to showing general color. Colors shown are catalog representations and can only approximate the actual color. After receipt of order, color charts with a wider range of selections are available upon request.

# 5 YEAR LIMITED WARRANTY

RCP Shelters, Inc. (hereinafter "RCP Shelters") warrants that the pavilion will be free from defects in materials and workmanship under normal use for a period of five (5) years from the delivery date. The entire liability of RCP Shelters and its suppliers, and the exclusive remedy shall be for RCP Shelters to repair or replace materials found to be defective. The repair or replacement of materials shall be at the expense of RCP Shelters.

This limited warranty is void if any damage has resulted from abnormal use, abuse, accident, vandalism, maintenance or lack of maintenance, misapplication, service, or modification by someone other than RCP Shelters or its suppliers. This limited warranty excludes color fading within ten (10) nautical miles of any area retaining salt water or brackish water. Any replacement part under warranty is warranted for the remaining original warranty period or six (6) months, whichever is longer.

In the event of a claim of defect in materials and workmanship, RCP Shelters shall be placed on notice of defect in writ-

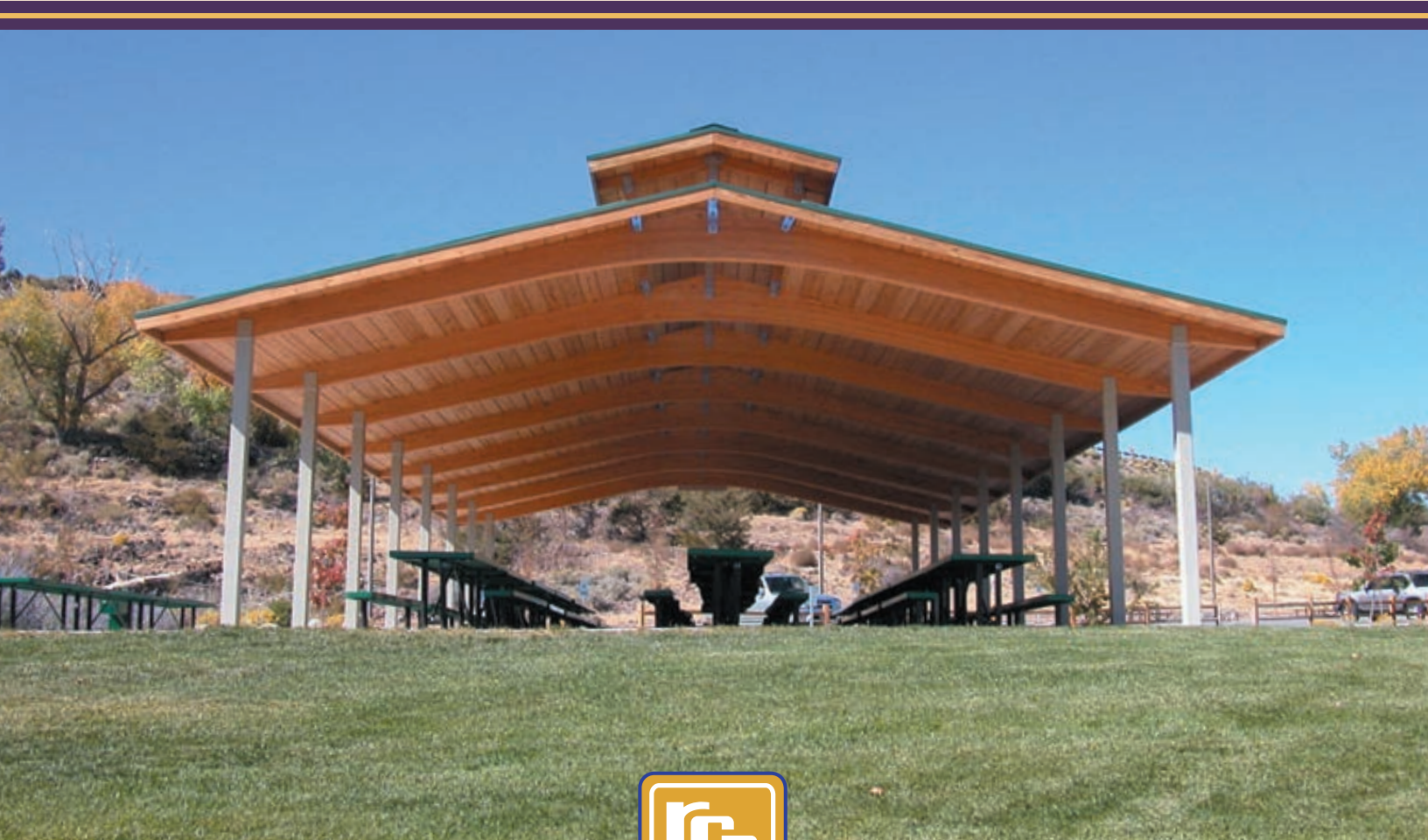
ing, delivered to the to RCP Shelters at the address indicated below, within thirty (30) calendar days from discovery of the defect in material and workmanship. No later than thirty (30) days from the date of receipt of the notice, RCP Shelters will determine whether to repair or to replace defective materials and respond in writing to advise how RCP Shelters will proceed on the warranty claim.

RCP Shelters, on behalf of itself and its suppliers, disclaims all other warranties, express or implied, including, but not limited to, implied warranties of merchantability and fitness for a particular purpose for the pavilion and any accompanying materials required for pavilion installation.

Under any circumstances RCP Shelters and its suppliers will not be liable for any damages whatsoever (including without limitations, damages for lost profits, interruption of service, or other pecuniary or consequential loss) arising out of the use or inability to use the pavilion, even if RCP Shelters is advised of the possibility of such damages.

The Customer Friendly Company for Over 50 Years

Shelters • Pavilions • Ramadas • Gazebos • Fabric Shades  
Band Shells • Amphitheaters • Carousel Covers • Bridges  
Dugouts • Mini Shelters • Kiosks • Trellises • Pergolas  
Enclosed Shelters • Restrooms • Concessions



## RCP Shelters, Inc.



Kraftsman Commercial Playgrounds & Water Parks  
19535 Haude Road  
Spring, TX 77388  
1-800-451-4869  
[www.kraftsmanplay.com](http://www.kraftsmanplay.com)